

# Standard Hydraulic Cylinders

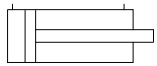


## Features

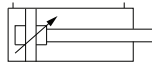
- Cylinders with M.S. end covers and 'Round' profile M.S. honed tube
- Long established design, proven ruggedness and reliability
- PTFE seals and bearing strips ensure perfect sealing and smooth movement
- Externally removable bolt-on cartridge assembly
- Stroke length offered up to 3500 mm
- Working pressure up to 200 bar
- Options: Bellows, rod extension and rod threading
- Specials: Bore above dia. 300 mm, LVDT, double-ended, stroke adjustable, large ports, working pressure up to 345 bar

## Available types

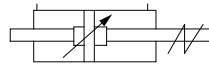
Non-Cushion



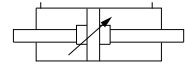
Cushion



Stroke Adjustable



Double-Ended



## Specifications

Bore sizes	40, 50, 65, 75, 100, 125, 150, 200, 250, 300 mm
Medium	Mineral oil (ISO VG 68)
Design	Piston cylinder with cushion/non-cushion version
Pressure range	Up to 3000 psi (200 bar), 345 bar on request
Temperature range	-10 °C to 60 °C, up to 150 °C with viton seals
Construction	End covers- mild steel, Tube- mild steel seamless honed, Piston rod- EN-8 hard chrome plated, stainless steel (optional), Piston- mild steel, Mountings- mild steel/cast iron, Seals- PTFE, NBR

## Ordering code

<b>FHC</b>	<b>S</b>	<b>A</b>	<b>A</b>	<b>1</b>	<b>150</b>	<b>G</b>	<b>0450</b>	<b>X</b>	<b>X</b>	<b>X</b>
J Jack	S Standard	<b>Pressure</b>		1 Front cushion	<b>Bore size</b>	<b>Stroke</b>		<b>Type 1</b>		
I Intensifier	C Swing clamp	A 3000 psi	B 5000 psi	2 Rear cushion		A 25.6	<b>Type 2</b>		<b>Type 3</b>	
				3 Both cushion	B 35.1	<b>X</b>		X Standard	X Std. (metric)	X Standard
				4 Non cushion	C 45.8	<b>X</b>		1 Stroke adjustable	1 Female inches	9 Rod extension
					D 50.8	<b>X</b>		2 Double ended	2 Female metric	0 Special
					E 58.4	<b>X</b>		3 Large Port	6 Viton seal	
					F 74.6	<b>X</b>				
					G 85.8	<b>X</b>				
					H 103	<b>X</b>				
					I 130.5	<b>X</b>				
					J 181.5	<b>X</b>				

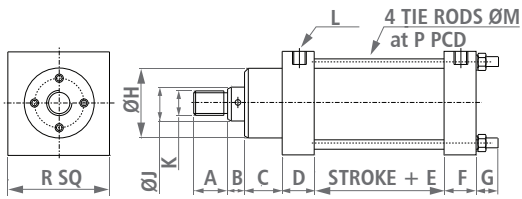
  

Mountings			
A Front flange rectangular	F Rear clevis round		
B Rear flange rectangular	G Foot		
C Front flange round	H Centre trunnion		
D Rear flange round	I Intermediate trunnion		
E Rear clevis square	J Basic		

• Custom made hydraulic cylinder can be made on request.

## Dimensions

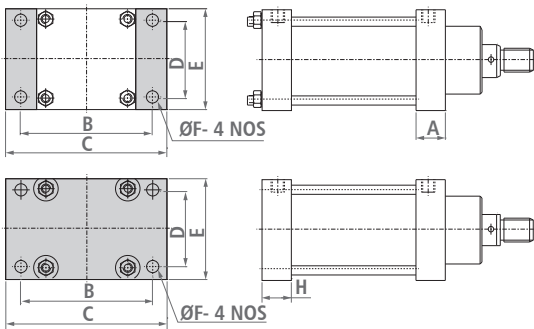
(All dimensions in mm)



## Basic

Bore	40	50	65	75	100	125	150
A	26	26	32	50	50	50	64
B	16	16	19	26	26	26	30
C	47	47	47	61	60	60	60
D	32	35	41	42	52	52	53
*E	65	65	77	85	92	102	107
F	24	26	32	32	45	45	45
G	32	33	33	37	42	46	46
H	68	68	77	100	115	115	146
J	25.6	25.6	35.1	45.8	58.4	58.4	85.8
K	M20X2.5	M20X2.5	M24X3	M33X3.5	M45X4.5	M45X4.5	M70X3
L	G 1/4	G 3/8	G 1/2	G 1/2	G 3/4	G 3/4	G 3/4
M	8	10	10	12	20	24	24
P	60	77	88	105	141.5	178	204
R	69	74	82	102	140	175	198

\* Stroke length above 1000 mm offered with stop tube.

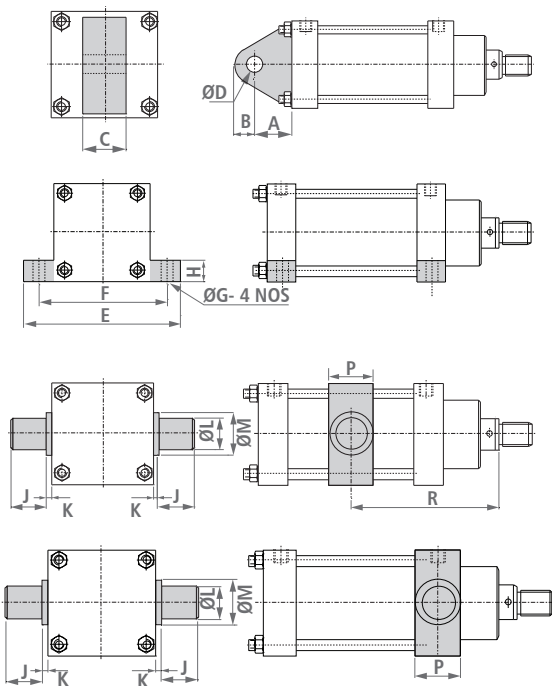


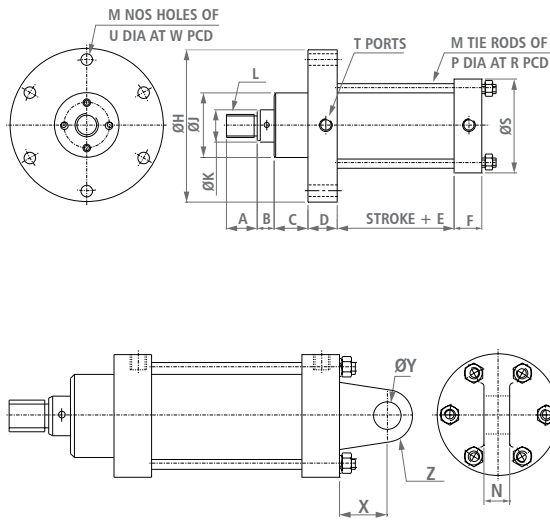
## Front and rear flange mounting

Bore	40	50	65	75	100	125	150
A	35	35	41	42	56	56	58
B	90	100	106	132	188	230	256
C	112	120	130	158	228	280	306
D	47	50	55	75	100	125	148
E	69	74	82	102	140	175	198
F	11	11	11	13	22	26	26
H	36	40	46	46	60	65	65

## Clevis, foot, intermediate trunnion and front trunnion mounting

Bore	40	50	65	75	100	125	150
A	30	36	36	43	62	72	85
B	18	22	22	28	40	50	55
C	20	30	30	40	50	60	65
D	15	20	20	25	35	45	50
E	116	120	130	158	228	280	306
F	96	100	106	132	188	230	256
G	11	11	13	13	22	26	26
H	15	20	25	25	30	40	40
J	30	35	35	44	44	44	50
K	5	5	5	5	5	5	5
L	30	35	35	44	44	44	50
M	40	50	50	60	60	67	85
P	40	50	50	60	60	67	85
R	Customer to specify						

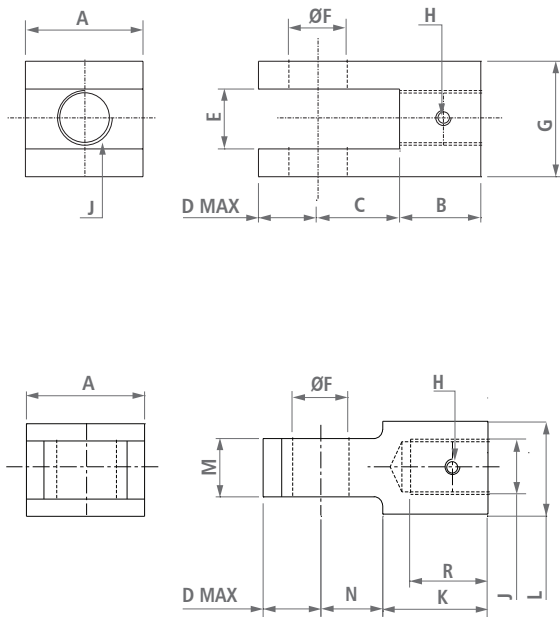




## Front flange and rear clevis mounting, round type

Bore	40	50	65	75	100	125	150	200	250	300
A	26	26	32	50	50	50	64	76	80	120
B	16	16	19	26	26	26	30	30	30	35
C	47	47	47	61	60	60	60	59	59	70
D	32	34	41	42	56	56	58	59	59	62
*E	65	65	77	85	92	102	107	119	129	139
F	24	26	32	32	45	45	45	48	48	62
H	115	145	157	185	265	295	350	415	480	550
J	68	68	77	100	115	115	146	167	195	261
K	25.6	25.6	35.1	45.8	58.4	58.4	85.8	103	130.5	181.5
L	M20X2.5	M20X2.5	M24X3	M33X3.5	M45X4.5	M45X4.5	M70X3	M75X3	M100X3	M150X5
M	6	6	6	6	6	6	6	8	10	16
N	20	30	30	40	50	60	65	75	100	120
P	8	10	10	12	20	20	24	24	24	24
R	60	77	88	105	141.5	172.5	204	267	332	403
S	77	98	110	130	180	210	251	315	380	450
T	G 1/4	G 3/8	G 1/2	G 1/2	G 3/4	G 3/4	G 3/4	G 3/4	G 3/4	G 3/4
U	9	11	11	13	22	22	26	26	26	26
W	96	122	135	160	225	255	305	370	435	505
X	30	36	36	43	62	72	85	120	150	170
Y	15	20	20	25	35	45	50	75	100	120
Z	R 18	R 22	R 22	R 28	R 40	R 50	R 55	R 90	R 120	R 140

## Cylinder accessories



## Rod fork and rod yoke

Bore	40	50	65	75	100	125	150
A	36	44	48	56	80	100	110
B	28	28	35	52	52	52	66
C	23	27	29	33	45	55	60
D	18	22	24	28	40	50	55
E	24	30	30	40	50	60	70
F	15	20	20	25	35	43	50
G	48	65	65	86	106	125	140
H	M8	M8	M8	M8	M8	M10	M10
J	M20X2.5	M20X2.5	M24X3	M33X3.5	M45X4.5	M45X4.5	M70X3
K	35	38	50	70	70	—	90
L	30	30	36	46	60	—	86
M	20	30	30	40	50	60	70
N	27	32	32	36	50	120	68
R	26	26	32	50	50	50	64

• For complete details, refer Product Data Sheet.