



# Pneumatic Valves, compact series

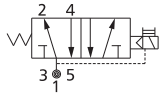
## Features

- 5/2 Solenoid and pilot actuated spool type compact valve
- Sleek aesthetics with spool type design
- High performance from proven design
- Air spring assisted design for faster response time
- Low power solenoid and manual override as a standard feature
- G 1/4 inlet and cylinder ports
- Facility of gang manifolding
- Options: G 1/8 inlet and cylinder ports, spring-return mushroom button and detent type selector switch, single pilot and double pilot

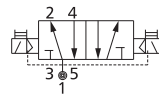


## Available types

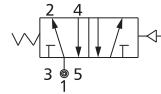
5/2 Single Solenoid



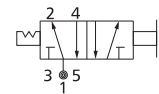
5/2 Double Solenoid



5/2 Single Pilot



5/2 Selector Switch



(1- Inlet, 2,4- Outlet, 3,5- Exhaust)

## Specifications

### 4-way (5/2)

Port Size	Orifice	Pressure	Flow	Material	Weight	Type	Part Code
BSP	dia	psi	lpm		kg		
G 1/8	5 mm	25 - 125	600	Al	0.3	Single Solenoid	PVSC4018G2S---1
G 1/8	5 mm	25 - 125	600	Al	0.45	Double Solenoid	PVSC4018G2D---1
G 1/8	5 mm	25 - 125	600	Al	0.3	Single pilot	FPVPOC018G42S---1
G 1/8	5 mm	25 - 125	600	Al	0.4	Double Pilot	FPVPOC018G42D---1
G 1/8	5 mm	25 - 125	600	Al	0.5	Selector Switch	FPVSWC018G42S---1
G 1/8	5 mm	25 - 125	600	Al	0.5	Mushroom button	FPVMBC018G42S---1
G 1/4	6 mm	25 - 125	700	Al	0.3	Single Solenoid	PVSC4014G2S---1
G 1/4	6 mm	25 - 125	700	Al	0.45	Double Solenoid	PVSC4014G2D---1
G 1/4	6 mm	25 - 125	700	Al	0.3	Single pilot	FPVPOC014G42S---1
G 1/4	6 mm	25 - 125	700	Al	0.4	Double Pilot	FPVPOC014G42D---1
G 1/4	6 mm	25 - 125	700	Al	0.5	Selector Switch	FPVSWC014G42S---1
G 1/4	6 mm	25 - 125	700	Al	0.5	Mushroom button	FPVMBC014G42S---1

• For complete details, refer Product Data Sheet.